

## \$800,000 - 703 Carter Crest Way, Edmonton

MLS® #E4430367

**\$800,000**

4 Bedroom, 3.00 Bathroom, 1,964 sqft

Single Family on 0.00 Acres

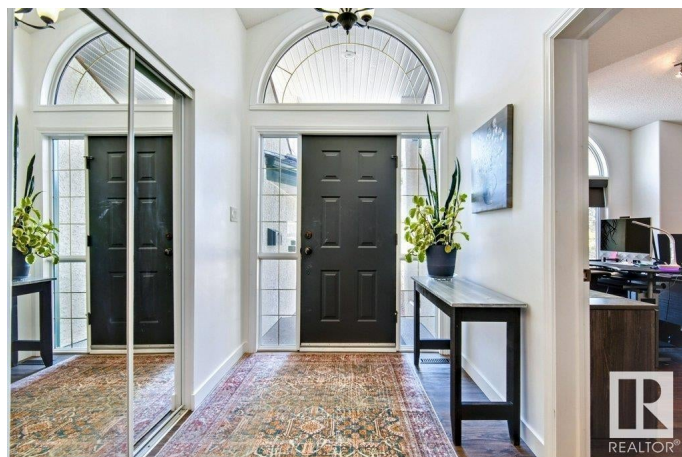
Carter Crest, Edmonton, AB

Captivating Carter Crest Bungalow offering almost 4000 Square Feet up and down, as well as 3 bedrooms on the main level and 2 more downstairs!! Prepare to be greeted by a lovely Front Office which could be used as a bedroom, Soaring Ceilings throughout, Dining Room to Host the Family, Big Kitchen with Stone Countertops and Updated Appliances, Breakfast Nook and LARGE Livingroom off the Back! Primary Bedroom with BIG Ensuite, and secondary bedroom round out the main level. Massive Open Basement is wonderful for the kids to run and play, or for a teenager hangout! 2 Spacious Bedrooms and Full Bathroom. Updated Vinyl Plank Flooring and Carpets throughout, Updated Furnace and HWT, OVERSIZED Garage measures almost 21x25, Composite Deck. NO POLY-B PLUMBING! Fantastic Access to all Shopping and Amenities at Riverbend Square AND the the River Valley - the best of BOTH WORLDS!

Built in 1997

### Essential Information

MLS® #	E4430367
Price	\$800,000
Bedrooms	4
Bathrooms	3.00
Full Baths	3



Square Footage	1,964
Acres	0.00
Year Built	1997
Type	Single Family
Sub-Type	Detached Single Family
Style	Bungalow
Status	Active

### **Community Information**

Address	703 Carter Crest Way
Area	Edmonton
Subdivision	Carter Crest
City	Edmonton
County	ALBERTA
Province	AB
Postal Code	T6R 2N3

### **Amenities**

Amenities	Deck, Exterior Walls- 2"x6", Vaulted Ceiling, Vinyl Windows
Parking	Double Garage Attached, Insulated, Over Sized, RV Parking

### **Interior**

Interior Features	ensuite bathroom
Appliances	Dishwasher-Built-In, Dryer, Hood Fan, Oven-Built-In, Oven-Microwave, Refrigerator, Stove-Countertop Electric, Washer
Heating	Forced Air-1, Natural Gas
Fireplace	Yes
Fireplaces	Mantel, Tile Surround
Stories	2
Has Basement	Yes
Basement	Full, Finished

### **Exterior**

Exterior	Wood, Stucco
Exterior Features	Corner Lot, Fenced, Fruit Trees/Shrubs, Park/Reserve, Playground Nearby, Public Transportation, Schools, Shopping Nearby, Treed Lot
Lot Description	57'x124'
Roof	Pine Shakes
Construction	Wood, Stucco

Foundation                Concrete Perimeter

**School Information**

Elementary                GEORGE H LUCK  
Middle                      RIVERBEND  
High                        LILLIAN OSBORNE

**Additional Information**

Date Listed                April 11th, 2025  
Days on Market        8  
Zoning                      Zone 14  
HOA Fees                  210  
HOA Fees Freq.        Annually

DATA IS DEEMED RELIABLE BUT IS NOT GUARANTEED ACCURATE BY THE REALTORS® ASSOCIATION OF EDMONTON. COPYRIGHT 2025 BY THE REALTORS® ASSOCIATION OF EDMONTON. ALL RIGHTS RESERVED.Trademarks are owned or controlled by the Canadian Real Estate Association (CREA) and identify real estate professionals who are members of CREA (REALTOR®, REALTORS®) and/or the quality of services they provide (MLS®, Multiple Listing Service®)  
Listing information last updated on April 19th, 2025 at 6:47am MDT