

\$1,149,900 - 32 Braeside Terrace, Sherwood Park

MLS® #E4430126

\$1,149,900

5 Bedroom, 3.00 Bathroom, 2,200 sqft

Single Family on 0.00 Acres

Broadmoor Estates, Sherwood Park, AB

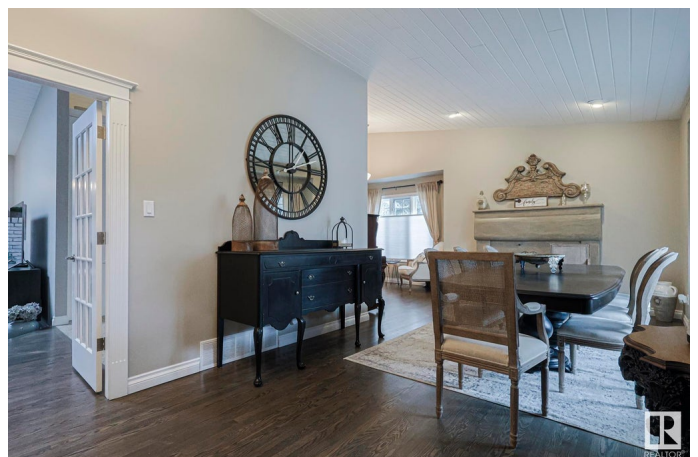
Backing to the 17th hole at Broadmoor Golf Course you'll find this 2200 sqft renovated, elegant bungalow. Offering 4185 sqft of living space, the flexible floorplan offers a family room, living room & dining room (living rm currently used for formal dining), and a renovated & timeless custom kitchen. 3+2 bedrooms! Gorgeous primary features 3 closets (1 California Closet in walk in) & 5 pce ensuite w/oversized shower w/2 heads & dual basin vanity. The main bathroom is also renovated! Finished basement w/bedrooms 4 & 5, a large rec room, games room, 3 pce bath & storage. Outstanding landscaping; a 3 time County in Bloom Award nominee! Iron fencing, gazebo, firepit, tiered gardens, perennials, trees & shrubs - must be seen! Additional features: 3 fireplaces (1 wood, 2 gas), central a/c, heated 22'7"x30'3" garage, fresh paint, newer baseboards, casings, trim, refinished hardwood, upgraded flooring throughout including granite tile in kitchen. Outstanding 990m/10,656sqft quiet corner lot on cul-de-sac! A "10"

Built in 1980

Essential Information

MLS® # E4430126

Price \$1,149,900



Bedrooms	5
Bathrooms	3.00
Full Baths	3
Square Footage	2,200
Acres	0.00
Year Built	1980
Type	Single Family
Sub-Type	Detached Single Family
Style	Bungalow
Status	Active

Community Information

Address	32 Braeside Terrace
Area	Sherwood Park
Subdivision	Broadmoor Estates
City	Sherwood Park
County	ALBERTA
Province	AB
Postal Code	T8A 3V6

Amenities

Amenities	Air Conditioner, Closet Organizers, Fire Pit, Gazebo, Skylight, Sprinkler Sys-Underground, Vaulted Ceiling
Parking Spaces	5
Parking	Double Garage Attached, Heated, Over Sized

Interior

Interior Features	ensuite bathroom
Appliances	Air Conditioning-Central, Dishwasher-Built-In, Dryer, Garage Control, Garage Opener, Garburator, Hood Fan, Refrigerator, Stove-Countertop Electric, Vacuum Systems, Washer, Window Coverings, See Remarks, Oven Built-In-Two, Garage Heater
Heating	Forced Air-2, Natural Gas
Fireplace	Yes
Fireplaces	Mantel
Stories	2
Has Basement	Yes
Basement	Full, Finished

Exterior

Exterior	Wood, Brick, Vinyl
Exterior Features	Backs Onto Park/Trees, Corner Lot, Cul-De-Sac, Fenced, Golf Nearby, Landscaped, Public Swimming Pool, Public Transportation, Schools, Shopping Nearby
Roof	Cedar Shakes
Construction	Wood, Brick, Vinyl
Foundation	Concrete Perimeter

School Information

Elementary	Mills Haven
Middle	Cloverbar
High	Salisbury

Additional Information

Date Listed	April 10th, 2025
Days on Market	10
Zoning	Zone 25

DATA IS DEEMED RELIABLE BUT IS NOT GUARANTEED ACCURATE BY THE REALTORS® ASSOCIATION OF EDMONTON. COPYRIGHT 2025 BY THE REALTORS® ASSOCIATION OF EDMONTON. ALL RIGHTS RESERVED. Trademarks are owned or controlled by the Canadian Real Estate Association (CREA) and identify real estate professionals who are members of CREA (REALTOR®, REALTORS®) and/or the quality of services they provide (MLS®, Multiple Listing Service®)

Listing information last updated on April 20th, 2025 at 2:47am MDT