

\$419,900 - 1674 Rutherford Road, Edmonton

MLS® #E4429219

\$419,900

3 Bedroom, 2.50 Bathroom, 1,429 sqft
Single Family on 0.00 Acres

Rutherford (Edmonton), Edmonton, AB

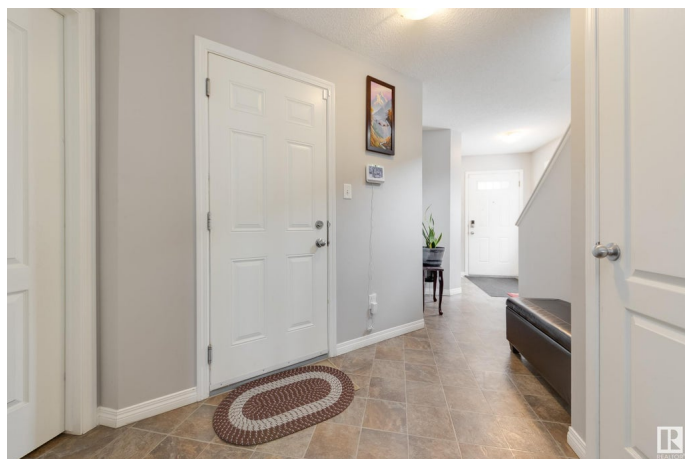
Nestled in one of Edmonton's most sought-after communities, this well-maintained residence offers an exceptional opportunity for both first-time homebuyers and savvy investors. The property's prime location ensures utmost convenience, with a plaza just steps from your doorstep featuring essential amenities; pharmacy, medical clinic, gas station with car wash. few steps to bus stop and schools, quick access to highway exits, enhances the appeal of this home. The upper level boasts three spacious bedrooms, including a master suite complete with an ensuite bathroom. A generously sized family room provides an ideal space for relaxation and family activities. On the main floor, the kitchen is equipped with a gas stove and stainless steel appliances, catering to culinary enthusiasts. A guest washroom adds to the convenience of the main living area. The garage offers ample storage space, accommodating various household items. This home harmoniously blends comfort, convenience, and investment potential.

Built in 2013

Essential Information

MLS® # E4429219

Price \$419,900



Bedrooms	3
Bathrooms	2.50
Full Baths	2
Half Baths	1
Square Footage	1,429
Acres	0.00
Year Built	2013
Type	Single Family
Sub-Type	Half Duplex
Style	2 Storey
Status	Active

Community Information

Address	1674 Rutherford Road
Area	Edmonton
Subdivision	Rutherford (Edmonton)
City	Edmonton
County	ALBERTA
Province	AB
Postal Code	T6W 2E6

Amenities

Amenities	See Remarks
Parking	Single Garage Attached

Interior

Interior Features	ensuite bathroom
Appliances	Dishwasher-Built-In, Dryer, Garage Opener, Hood Fan, Refrigerator, Stove-Gas, Washer, Window Coverings
Heating	Forced Air-1, Natural Gas
Stories	2
Has Basement	Yes
Basement	Full, Unfinished

Exterior

Exterior	Wood, Vinyl
Exterior Features	Airport Nearby, Fenced, Playground Nearby, Public Transportation, Schools, Shopping Nearby
Roof	Vinyl Shingles

Construction Wood, Vinyl
Foundation Concrete Perimeter

Additional Information

Date Listed April 4th, 2025
Days on Market 2
Zoning Zone 55

DATA IS DEEMED RELIABLE BUT IS NOT GUARANTEED ACCURATE BY THE REALTORS® ASSOCIATION OF EDMONTON. COPYRIGHT 2025 BY THE REALTORS® ASSOCIATION OF EDMONTON. ALL RIGHTS RESERVED. Trademarks are owned or controlled by the Canadian Real Estate Association (CREA) and identify real estate professionals who are members of CREA (REALTOR®, REALTORS®) and/or the quality of services they provide (MLS®, Multiple Listing Service®)

Listing information last updated on April 6th, 2025 at 7:47am MDT