

\$959,900 - 3296 Chernowski Way, Edmonton

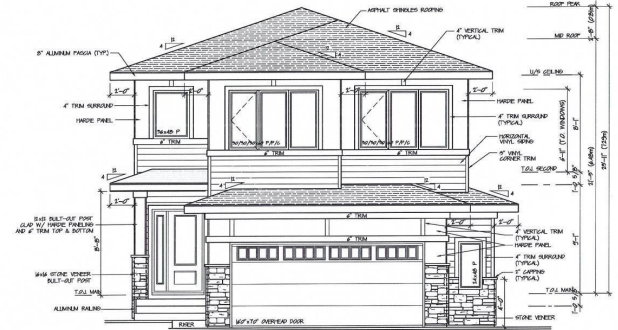
MLS® #E4428811

\$959,900

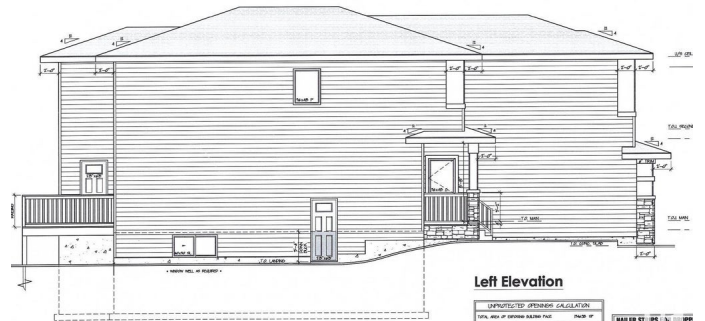
4 Bedroom, 3.00 Bathroom, 2,406 sqft
Single Family on 0.00 Acres

Chappelle Area, Edmonton, AB

Brand new build 2406 Sq Ft 2 storey home backing a ravine. This home has a open concept with 4 bedrooms upstairs with a beautiful ensuite bath with tub and enclosed modern glass shower and second floor laundry and also a large bonus room overlooking a modern concept main floor with high ceilings and modern finishing's. This home features 9 foot ceilings and 8 foot doors. The home also features a SEPERATE SIDE ENTRANCE to basement with potential for a legal secondary suite. The main floor also has an office/Den area and a beautiful kitchen area with an extra butlers pantry/spice kitchen and large mud room off the back garage door and a full bath on the main. This home is amazing and provides perfect spaces for a growing family. Still time to choose interior and exterior colours and some finishings to make this home feel custom to your needs.

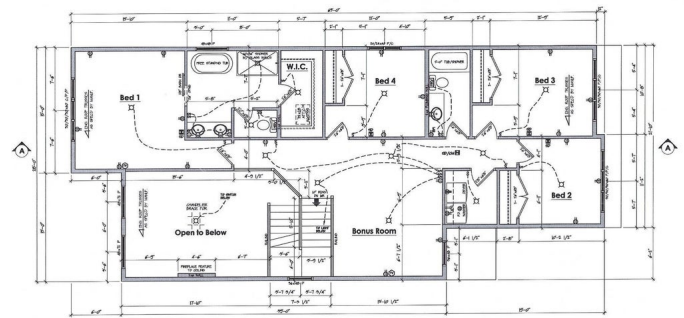


Front Elevation



Left Elevation

| MANUFACTURED OPENING CALCULATION | |
|--|-------|
| TOTAL AREA OF OPENING (SQUARE FEET) | 10.0 |
| MINIMUM AREA OF MANUFACTURED OPENING (SQUARE FEET) | 10.0 |
| PERCENTAGE OF MANUFACTURED OPENING | 100.0 |



Second Floor Plan
12/16 of 12/16
8 FT Ceiling

Built in 2025

Essential Information

| | |
|----------------|-----------|
| MLS® # | E4428811 |
| Price | \$959,900 |
| Bedrooms | 4 |
| Bathrooms | 3.00 |
| Full Baths | 3 |
| Square Footage | 2,406 |

| | |
|------------|------------------------|
| Acres | 0.00 |
| Year Built | 2025 |
| Type | Single Family |
| Sub-Type | Detached Single Family |
| Style | 2 Storey |
| Status | Active |

Community Information

| | |
|-------------|---------------------|
| Address | 3296 Chernowski Way |
| Area | Edmonton |
| Subdivision | Chappelle Area |
| City | Edmonton |
| County | ALBERTA |
| Province | AB |
| Postal Code | T6W 5H2 |

Amenities

| | |
|-----------|------------------------|
| Amenities | See Remarks |
| Parking | Double Garage Attached |

Interior

| | |
|-------------------|---------------------------|
| Interior Features | ensuite bathroom |
| Appliances | See Remarks |
| Heating | Forced Air-1, Natural Gas |
| Fireplace | Yes |
| Fireplaces | Insert |
| Stories | 2 |
| Has Basement | Yes |
| Basement | Full, Unfinished |

Exterior

| | |
|-------------------|---------------------------|
| Exterior | Wood, Vinyl |
| Exterior Features | Park/Reserve, See Remarks |
| Roof | Asphalt Shingles |
| Construction | Wood, Vinyl |
| Foundation | Concrete Perimeter |

Additional Information

| | |
|-------------|-----------------|
| Date Listed | April 2nd, 2025 |
|-------------|-----------------|

Days on Market 10

Zoning Zone 55

DATA IS DEEMED RELIABLE BUT IS NOT GUARANTEED ACCURATE BY THE REALTORS® ASSOCIATION OF EDMONTON. COPYRIGHT 2025 BY THE REALTORS® ASSOCIATION OF EDMONTON. ALL RIGHTS RESERVED. Trademarks are owned or controlled by the Canadian Real Estate Association (CREA) and identify real estate professionals who are members of CREA (REALTOR®, REALTORS®) and/or the quality of services they provide (MLS®, Multiple Listing Service®)

Listing information last updated on April 12th, 2025 at 1:17am MDT