

Courtesy Of Jay Lewis Of RE/MAX Excellence

\$410,500 - 89 Brickyard Drive, Stony Plain

MLS® #E4428450

\$410,500

3 Bedroom, 2.50 Bathroom, 1,382 sqft
Single Family on 0.00 Acres

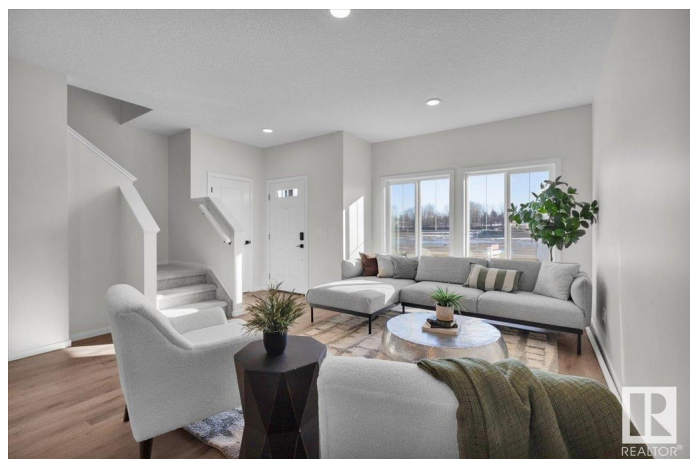
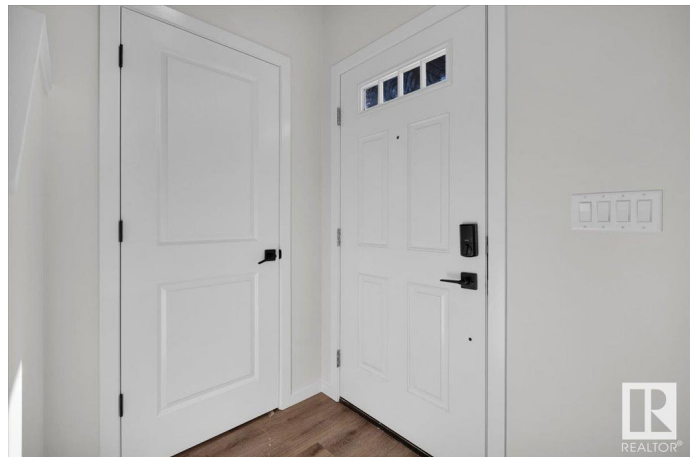
Brickyard, Stony Plain, AB

Step into this stunning, brand-new two-storey home in Stony Plain! Designed with both style and practicality in mind, this end unit attached home boasts 3 bedrooms, 2.5 bathrooms, a double detached garage, and full landscaping. The open-concept main floor is perfect for entertaining, featuring a stylish kitchen with a large breakfast bar, stainless steel appliances, quartz countertops, and sleek vinyl plank flooring throughout. A 2pc bathroom and a mudroom with built-in bench and cubbies complete the layout near the back entrance. Upstairs, you'll find a 4pc main bath, laundry area, 2 bedrooms and a spacious primary bedroom with a walk-in closet and a luxurious 4pc ensuite. Combining modern design with everyday functionality, this home is located in a highly sought-after neighbourhood. Don't miss the opportunity to view it!
Photos are representative

Built in 2025

Essential Information

MLS® #	E4428450
Price	\$410,500
Bedrooms	3
Bathrooms	2.50
Full Baths	2
Half Baths	1



Square Footage	1,382
Acres	0.00
Year Built	2025
Type	Single Family
Sub-Type	Residential Attached
Style	2 Storey
Status	Active

Community Information

Address	89 Brickyard Drive
Area	Stony Plain
Subdivision	Brickyard
City	Stony Plain
County	ALBERTA
Province	AB
Postal Code	T7Z 1C3

Amenities

Amenities	Ceiling 9 ft., Deck, No Animal Home, No Smoking Home
Parking	Double Garage Detached

Interior

Interior Features	ensuite bathroom
Appliances	Dishwasher-Built-In, Microwave Hood Fan, Refrigerator, Stove-Electric
Heating	Forced Air-1, Natural Gas
Fireplace	Yes
Fireplaces	Insert
Stories	2
Has Basement	Yes
Basement	Full, Unfinished

Exterior

Exterior	Wood, Vinyl
Exterior Features	Back Lane, Landscaped, Park/Reserve, Playground Nearby, Schools, Shopping Nearby
Roof	Asphalt Shingles
Construction	Wood, Vinyl
Foundation	Concrete Perimeter

Additional Information

Date Listed April 1st, 2025

Days on Market 10

Zoning Zone 91

DATA IS DEEMED RELIABLE BUT IS NOT GUARANTEED ACCURATE BY THE REALTORS® ASSOCIATION OF EDMONTON. COPYRIGHT 2025 BY THE REALTORS® ASSOCIATION OF EDMONTON. ALL RIGHTS RESERVED. Trademarks are owned or controlled by the Canadian Real Estate Association (CREA) and identify real estate professionals who are members of CREA (REALTOR®, REALTORS®) and/or the quality of services they provide (MLS®, Multiple Listing Service®)

Listing information last updated on April 11th, 2025 at 3:17pm MDT