

Courtesy Of Tammy A Booth Of 2% Realty

\$469,900 - 1987 Avondale Crest, Sherwood Park

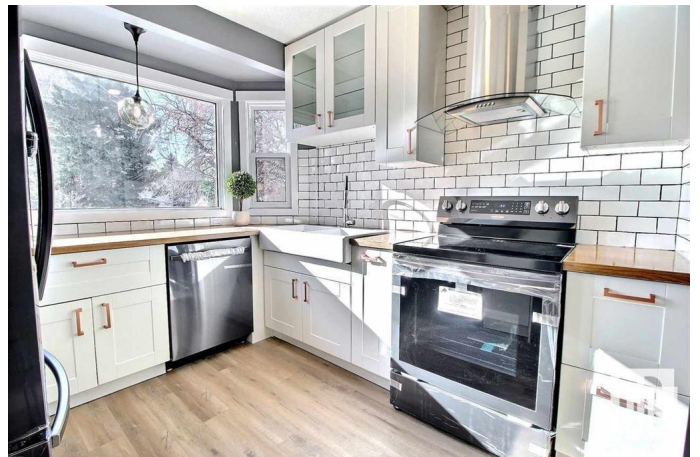
MLS® #E4427171

\$469,900

5 Bedroom, 2.50 Bathroom, 971 sqft
Single Family on 0.00 Acres

Broadmoor, Sherwood Park, AB

Broadmoor Estates GEM! Professionally renovated in 2021. This beautiful bungalow is nestled nicely in a quiet cul-de-sac. Enjoy approx. 1,942 sqft of total living space with the fully finished basement. Features 3+2 bdrms, 2.5 baths & a double detached HEATED grg. Since 2021 the west fence with gate has been replaced and NEW electrical panel. Upon entering the home, you will be impressed with modern vinyl plank flooring that flows through the entire main floor. An inviting living room with large bay window that bathes this space with warming natural light. A stunning kitchen with upgraded appliances subway tile backsplash, timeless white cabinets with chic copper colored handles another large bay window overlooking the private backyard. Main floor is completed with 3 bedrooms and a stylish 5-piece main bath. The bsmt features a large recreational room, 2 additional bdrm, a half bath and a master bedroom with a beautiful 3-piece ensuite!



Built in 1962

Essential Information

| | |
|-----------|-----------|
| MLS® # | E4427171 |
| Price | \$469,900 |
| Bedrooms | 5 |
| Bathrooms | 2.50 |

| | |
|----------------|------------------------|
| Full Baths | 2 |
| Half Baths | 1 |
| Square Footage | 971 |
| Acres | 0.00 |
| Year Built | 1962 |
| Type | Single Family |
| Sub-Type | Detached Single Family |
| Style | Bungalow |
| Status | Active |

Community Information

| | |
|-------------|---------------------|
| Address | 1987 Avondale Crest |
| Area | Sherwood Park |
| Subdivision | Broadmoor |
| City | Sherwood Park |
| County | ALBERTA |
| Province | AB |
| Postal Code | T8A 0Y1 |

Amenities

| | |
|-----------|---|
| Amenities | Patio, R.V. Storage, Vinyl Windows, See Remarks |
| Parking | Double Garage Detached, Heated |

Interior

| | |
|-------------------|--|
| Interior Features | ensuite bathroom |
| Appliances | Dishwasher-Built-In, Dryer, Freezer, Garage Control, Garage Opener, Hood Fan, Oven-Microwave, Refrigerator, Stove-Electric, Washer, Window Coverings |
| Heating | Forced Air-1, Natural Gas |
| Stories | 2 |
| Has Basement | Yes |
| Basement | Full, Finished |

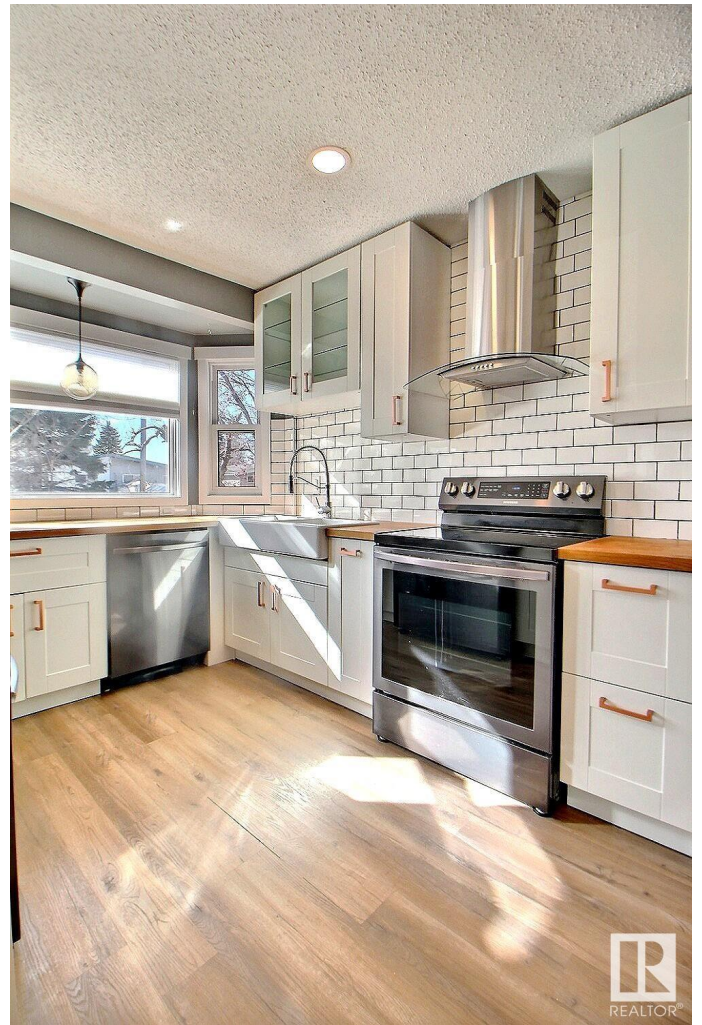
Exterior

| | |
|-------------------|---|
| Exterior | Wood, Vinyl |
| Exterior Features | Cul-De-Sac, Fenced, Landscaped, Playground Nearby, Public Swimming Pool, Public Transportation, Schools, Shopping Nearby, See Remarks |
| Roof | Asphalt Shingles |

Construction Wood, Vinyl
Foundation Concrete Perimeter

Additional Information

Date Listed March 24th, 2025
Days on Market 13
Zoning Zone 25



DATA IS DEEMED RELIABLE BUT IS NOT GUARANTEED ACCURATE BY THE REALTORS® ASSOCIATION OF EDMONTON. COPYRIGHT 2025 BY THE REALTORS® ASSOCIATION OF EDMONTON. ALL RIGHTS RESERVED. Trademarks are owned or controlled by the Canadian Real Estate Association (CREA) and identify real estate professionals who are members of CREA (REALTOR®, REALTORS®) and/or the quality of services they provide (MLS®, Multiple Listing Service®)

Listing information last updated on April 6th, 2025 at 1:02pm MDT