

\$209,900 - 14311 23 Street, Edmonton

MLS® #E4426994

\$209,900

3 Bedroom, 1.50 Bathroom, 1,113 sqft
Condo / Townhouse on 0.00 Acres

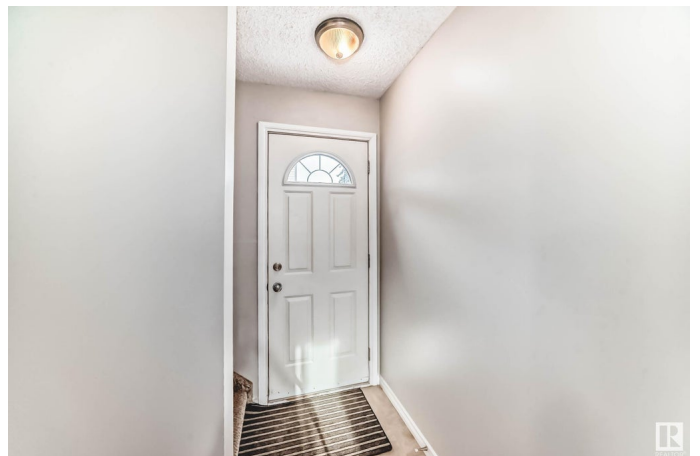
Bannerman, Edmonton, AB

Home Sweet Home !!! The perfect 3 bedroom, 2 washroom, 2 storey townhouse with an Exceptional Fenced South Back Yard which sides and backs more spacious residential back yard settings. Exhilarating Special Feeling of experiencing the best of the scenic outdoors from Your living room ... The perfect location close to schools, parks, and services, major shopping big box stores, transportation close, a short distance just minutes walk or drive. Claremont Place has had windows, doors etc exterior upgrades over the years. Kitchen & dining, living room adjoining, makes for an excellent floor plan allowing natural light to flow through the main floor. Upgraded Maple Kitchen cabinetry and complimenting washroom vanities provide elegance. The lower level is partly developed but is basically Your canvas to finish as required making a lot of living space on three separate levels. Amazing potential to build equity in a residential setting. Great VALUE and Great Lifestyle with Years of comfort and enjoyment here

Built in 1979

Essential Information

MLS® #	E4426994
Price	\$209,900



Bedrooms	3
Bathrooms	1.50
Full Baths	1
Half Baths	1
Square Footage	1,113
Acres	0.00
Year Built	1979
Type	Condo / Townhouse
Sub-Type	Townhouse
Style	2 Storey
Status	Active

Community Information

Address	14311 23 Street
Area	Edmonton
Subdivision	Bannerman
City	Edmonton
County	ALBERTA
Province	AB
Postal Code	T5Y 1N1

Amenities

Amenities	Off Street Parking, On Street Parking, Deck, Parking-Extra, Parking-Visitor, Vinyl Windows, See Remarks
Parking Spaces	1
Parking	Stall

Interior

Appliances	Dishwasher-Built-In, Dryer, Refrigerator, Stove-Electric, Washer
Heating	Forced Air-1, Natural Gas
Stories	2
Has Basement	Yes
Basement	Full, Partially Finished

Exterior

Exterior	Wood, Stucco, Vinyl
Exterior Features	Fenced, Flat Site, Landscaped, Playground Nearby, Public Transportation, Schools, Shopping Nearby, See Remarks
Roof	Asphalt Shingles

Construction Wood, Stucco, Vinyl
Foundation Concrete Perimeter

Additional Information

Date Listed March 21st, 2025

Days on Market 14

Zoning Zone 35

Condo Fee \$321

DATA IS DEEMED RELIABLE BUT IS NOT GUARANTEED ACCURATE BY THE REALTORS® ASSOCIATION OF EDMONTON. COPYRIGHT 2025 BY THE REALTORS® ASSOCIATION OF EDMONTON. ALL RIGHTS RESERVED. Trademarks are owned or controlled by the Canadian Real Estate Association (CREA) and identify real estate professionals who are members of CREA (REALTOR®, REALTORS®) and/or the quality of services they provide (MLS®, Multiple Listing Service®)

Listing information last updated on April 4th, 2025 at 8:47pm MDT