

\$275,000 - 4427 50a Avenue, Lamont

MLS® #E4426443

\$275,000

5 Bedroom, 2.50 Bathroom, 1,088 sqft
Single Family on 0.00 Acres

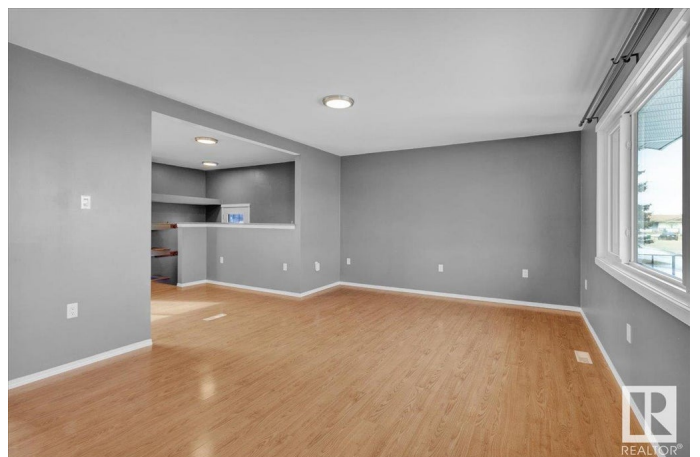
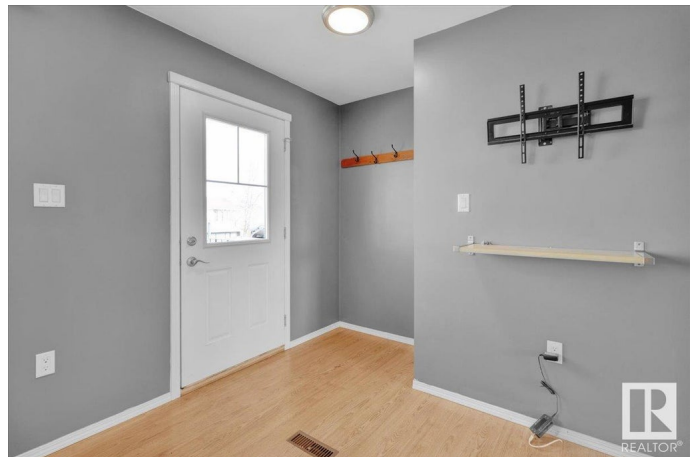
Lamont, Lamont, AB

Fabulous family home walking distance to schools! This 1088 sq ft bungalow enjoys a total of 5 bedrooms PLUS a den! with 3 bedrooms on the main floor with an open concept kitchen and livingroom. Updated kitchen and flooring, renovated main floor bath, PLUS an ensuite, this home is sure to impress. Finished basement (needs flooring) with 2 bedrooms and a den, rec room and a 3 piece bath, perfect for a family! There is a side entrance that leads to the large backyard with newer fence and detached garage. Enjoy no neighbors behind you with a back alley; making it convenient to park toys also. Walking distance to the elementary and high school, this home is located in a prime location!

Built in 1978

Essential Information

| | |
|----------------|-----------|
| MLS® # | E4426443 |
| Price | \$275,000 |
| Bedrooms | 5 |
| Bathrooms | 2.50 |
| Full Baths | 2 |
| Half Baths | 1 |
| Square Footage | 1,088 |
| Acres | 0.00 |
| Year Built | 1978 |



| | |
|----------|------------------------|
| Type | Single Family |
| Sub-Type | Detached Single Family |
| Style | Bungalow |
| Status | Active |

Community Information

| | |
|-------------|-----------------|
| Address | 4427 50a Avenue |
| Area | Lamont |
| Subdivision | Lamont |
| City | Lamont |
| County | ALBERTA |
| Province | AB |
| Postal Code | T0B 2R0 |

Amenities

| | |
|-----------|--------------------------------|
| Amenities | Deck, Front Porch, See Remarks |
| Parking | Single Garage Detached |

Interior

| | |
|-------------------|--|
| Interior Features | ensuite bathroom |
| Appliances | Dishwasher-Built-In, Dryer, Refrigerator, Stove-Electric, Washer |
| Heating | Forced Air-1, Natural Gas |
| Stories | 1 |
| Has Basement | Yes |
| Basement | Full, Finished |

Exterior

| | |
|-------------------|---|
| Exterior | Wood, Vinyl |
| Exterior Features | Back Lane, Fenced, Landscaped, Playground Nearby, See Remarks |
| Roof | Asphalt Shingles |
| Construction | Wood, Vinyl |
| Foundation | Concrete Perimeter |

Additional Information

| | |
|----------------|------------------|
| Date Listed | March 17th, 2025 |
| Days on Market | 25 |
| Zoning | Zone 62 |

DATA IS DEEMED RELIABLE BUT IS NOT GUARANTEED ACCURATE BY THE REALTORS® ASSOCIATION OF EDMONTON. COPYRIGHT 2025 BY THE REALTORS® ASSOCIATION OF EDMONTON. ALL RIGHTS RESERVED. Trademarks are owned or controlled by the Canadian Real Estate Association (CREA) and identify real

estate professionals who are members of CREA (REALTOR®®, REALTORS®®) and/or the quality of services they provide (MLS®®, Multiple Listing Service®®)

Listing information last updated on April 11th, 2025 at 12:32pm MDT