

\$230,000 - 2215 4 Augustine Crescent, Sherwood Park

MLS® #E4426241

\$230,000

1 Bedroom, 1.00 Bathroom, 680 sqft
Condo / Townhouse on 0.00 Acres

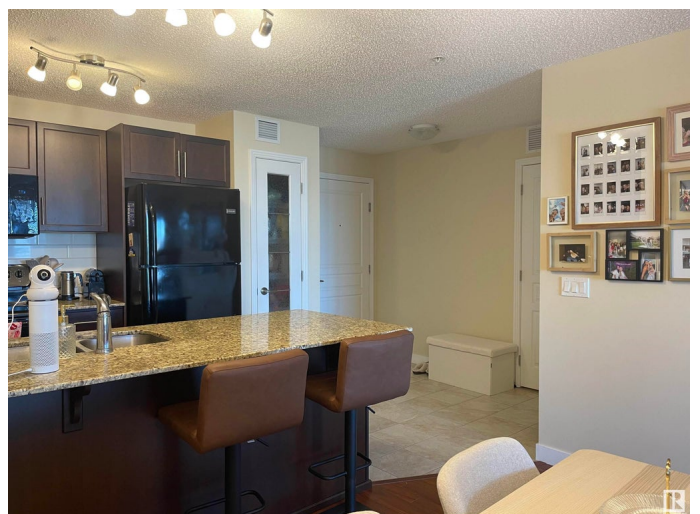
Aspen Trails, Sherwood Park, AB

Spacious 1-Bedroom Condo with Covered Deck & Amenities! Escape the hustle and bustle in this stylish and comfortable 1-bedroom condo! Perfect for singles, couples, or anyone seeking a convenient and modern living Bright & Airy Living: Enjoy a thoughtfully designed layout maximizing natural light and creating a welcoming atmosphere. Private Covered Deck: Extend your living space outdoors! Perfect for morning coffee, evening relaxation, or entertaining friends, rain or shine. In-Suite Appliances including washer dryer and storage room. Modern kitchen equipped with all the essentials, making meal prep a breeze. fridge, dishwasher, stove, microwave. Dedicated Exercise Room: Stay active and healthy without leaving the building! Enjoy convenient access to a fully equipped fitness center. close to public transit, shopping, dining, parks.

Built in 2015

Essential Information

MLS® #	E4426241
Price	\$230,000
Bedrooms	1
Bathrooms	1.00
Full Baths	1
Square Footage	680



Acres	0.00
Year Built	2015
Type	Condo / Townhouse
Sub-Type	Apartment High Rise
Style	Single Level Apartment
Status	Active

Community Information

Address	2215 4 Augustine Crescent
Area	Sherwood Park
Subdivision	Aspen Trails
City	Sherwood Park
County	ALBERTA
Province	AB
Postal Code	T8H 0X8

Amenities

Amenities	Deck, Exercise Room, Storage-In-Suite
Parking	Stall

Interior

Appliances	Dishwasher-Built-In, Dryer, Microwave Hood Fan, Refrigerator, Stove-Electric, Washer
Heating	Forced Air-1, Natural Gas
# of Stories	4
Stories	1
Has Basement	Yes
Basement	None, No Basement

Exterior

Exterior	Wood, Vinyl
Exterior Features	Playground Nearby
Roof	Asphalt Shingles
Construction	Wood, Vinyl
Foundation	Concrete Perimeter

Additional Information

Date Listed	March 18th, 2025
Days on Market	18

Zoning	Zone 25
Condo Fee	\$302

DATA IS DEEMED RELIABLE BUT IS NOT GUARANTEED ACCURATE BY THE REALTORS® ASSOCIATION OF EDMONTON. COPYRIGHT 2025 BY THE REALTORS® ASSOCIATION OF EDMONTON. ALL RIGHTS RESERVED. Trademarks are owned or controlled by the Canadian Real Estate Association (CREA) and identify real estate professionals who are members of CREA (REALTOR®, REALTORS®) and/or the quality of services they provide (MLS®, Multiple Listing Service®)

Listing information last updated on April 4th, 2025 at 9:31pm MDT