

Courtesy Of Keith A Faria Of RE/MAX River City

## \$639,900 - 356 Calderon Crescent, Edmonton

MLS® #E4423467

**\$639,900**

4 Bedroom, 3.50 Bathroom, 2,442 sqft  
Single Family on 0.00 Acres

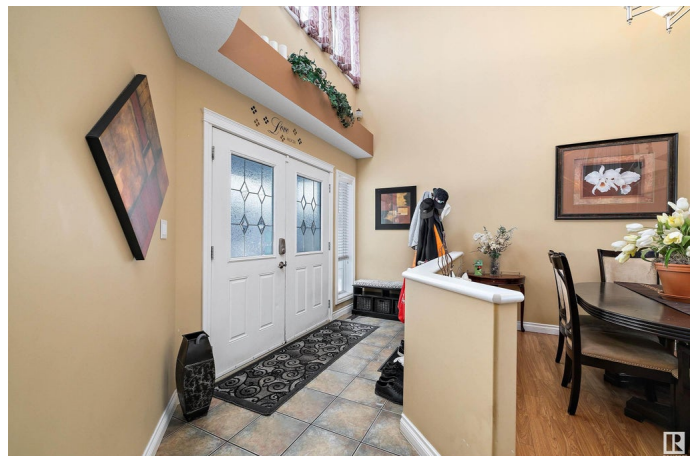
Cumberland, Edmonton, AB

Welcome to this stunning 2 storey home in Signature Pointe! The main floor is filled with natural light and boasts soaring vaulted ceilings and beautiful architectural arches. The layout includes a separate formal dining room, a cozy gas fireplace, and a spacious kitchen featuring a large island, walk-in pantry and new stainless steel appliances (2023) plus main floor laundry! The grand staircase leads you to the second floor, where you'll find a Massive bonus room, 4 piece bathroom, 3 generously sized bedrooms including large primary bedroom with full 4 piece ensuite, The fully finished lower level adds living space with a large recreation room, Movie Theatre all set up for you, a 4th bedroom, and a 3 piece bathroom. Additional features include a brand-new hot water tank, and 50-year rubber shingles installed in 2023. Double attached heated garage and Central A/C! This home is close to the lake & walking trails! Very easy access to St. Albert, Anthony Henday, Edmonton Garrison and so much more!

Built in 2003

### Essential Information

MLS® #	E4423467
Price	\$639,900
Bedrooms	4



Bathrooms	3.50
Full Baths	3
Half Baths	1
Square Footage	2,442
Acres	0.00
Year Built	2003
Type	Single Family
Sub-Type	Detached Single Family
Style	2 Storey
Status	Active

### **Community Information**

Address	356 Calderon Crescent
Area	Edmonton
Subdivision	Cumberland
City	Edmonton
County	ALBERTA
Province	AB
Postal Code	T6V 1R8

### **Amenities**

Amenities	See Remarks
Parking	Double Garage Attached

### **Interior**

Interior Features	ensuite bathroom
Appliances	Dishwasher-Built-In, Dryer, Garage Control, Garage Opener, Refrigerator, Stove-Electric, Washer, Window Coverings
Heating	Forced Air-1, Natural Gas
Fireplace	Yes
Fireplaces	Tile Surround
Stories	3
Has Basement	Yes
Basement	Full, Finished

### **Exterior**

Exterior	Wood, Vinyl
Exterior Features	Fenced, Playground Nearby, Public Transportation, Schools, Shopping Nearby

Roof	Asphalt Shingles
Construction	Wood, Vinyl
Foundation	Concrete Perimeter

### **Additional Information**

Date Listed	February 28th, 2025
Days on Market	39
Zoning	Zone 27

DATA IS DEEMED RELIABLE BUT IS NOT GUARANTEED ACCURATE BY THE REALTORS® ASSOCIATION OF EDMONTON. COPYRIGHT 2025 BY THE REALTORS® ASSOCIATION OF EDMONTON. ALL RIGHTS RESERVED. Trademarks are owned or controlled by the Canadian Real Estate Association (CREA) and identify real estate professionals who are members of CREA (REALTOR®, REALTORS®) and/or the quality of services they provide (MLS®, Multiple Listing Service®)

Listing information last updated on April 8th, 2025 at 4:32am MDT