

Courtesy Of Noah Issa and Ali Shaben Of Sable Realty

\$0 - 200 664 Wye Road, Sherwood Park

MLS® #E4421230

\$0

0 Bedroom, 0.00 Bathroom,
Retail on 0.00 Acres

Nottingham, Sherwood Park, AB

Prime Retail Space for Lease in Nottingham Centre – A 1,240 SF retail unit, formerly a hair salon, is now available for lease in Nottingham Centre, a high-exposure commercial property on Wye Road in Sherwood Park. This turnkey space is ideal for a variety of retail, personal service, or medical uses. Strategically located in a thriving retail hub, the property benefits from strong demographics, including a 71,307 population and an average household income of \$169K within 5KM. Immediate possession available.

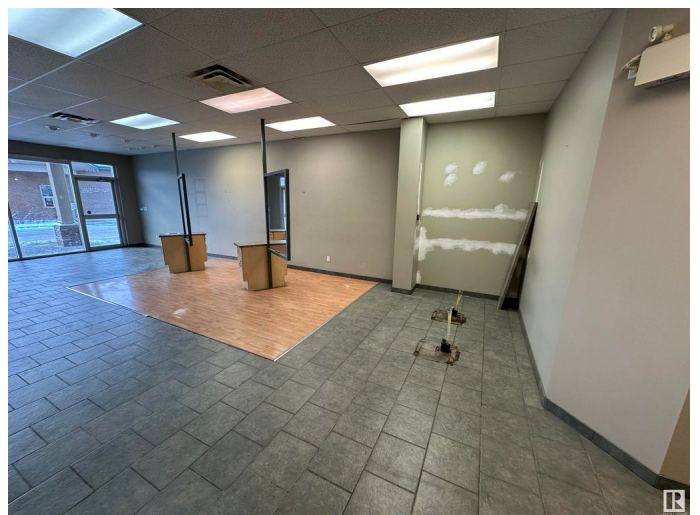
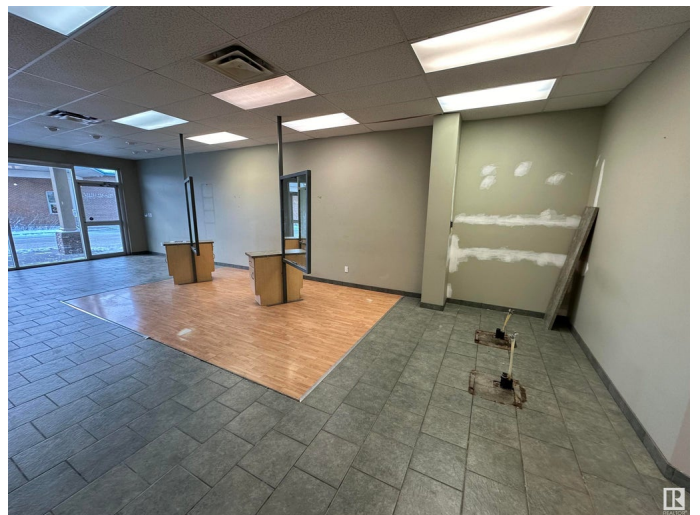
Built in 2000

Essential Information

| | |
|------------|----------|
| MLS® # | E4421230 |
| Bathrooms | 0.00 |
| Acres | 0.00 |
| Year Built | 2000 |
| Type | Retail |
| Status | Active |

Community Information

| | |
|-------------|------------------|
| Address | 200 664 Wye Road |
| Area | Sherwood Park |
| Subdivision | Nottingham |
| City | Sherwood Park |
| County | ALBERTA |



Province AB
Postal Code T8A 6G3

Exterior

Exterior Block
Construction Block

Additional Information

Date Listed February 12th, 2025
Days on Market 51
Zoning Zone 25

DATA IS DEEMED RELIABLE BUT IS NOT GUARANTEED ACCURATE BY THE REALTORS® ASSOCIATION OF EDMONTON. COPYRIGHT 2025 BY THE REALTORS® ASSOCIATION OF EDMONTON. ALL RIGHTS RESERVED. Trademarks are owned or controlled by the Canadian Real Estate Association (CREA) and identify real estate professionals who are members of CREA (REALTOR®, REALTORS®) and/or the quality of services they provide (MLS®, Multiple Listing Service®)

Listing information last updated on April 4th, 2025 at 11:47am MDT