

\$399,000 - Road, Edmonton

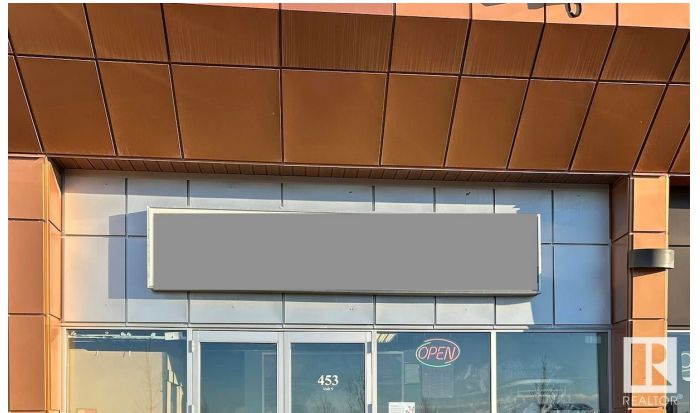
MLS® #E4420836

\$399,000

0 Bedroom, 0.00 Bathroom,
Business on 0.00 Acres

Ellerslie Industrial, Edmonton, AB

A fantastic opportunity to own a well-established dry-cleaning and tailoring business in a high-traffic, affluent neighborhood of Edmonton. This full-service plant is fully equipped and ready for seamless operations. Equipment Includes:Fulton Boiler (2022 model, 150 PSI), Realstar 40lb Multi Solvent Dry Cleaning Machine, Sankosha LP 580 Single Buck Shirt Unit, Sankosha LP 690 Collar and Cuff Machine, Sankosha DP 610 Legger Press, Sankosha DP 420 Utility Press, Sankosha DF-50 Tensioning Form Finisher, Continental 55lb High-Speed Washer, Water Softener (2020 model), Stainless Steel Exhaust Fan (2020 model), Rooftop Exhaust Fan (2017 model), Copco 50 HP Industrial Air Compressor (2017 model), Steam Mixing Valve (2017 model), 2 Commercial Sewing Machines, Garment Conveyor, Huebsch 50lb Gas Dryer (1998 model), Fulton Blow Down Tank. Located in a highly visible commercial strip, the business enjoys a loyal customer base and steady foot traffic. Turnkey opportunity for an owner-operator or an investor.



Built in 2011

Essential Information

MLS® #	E4420836
Price	\$399,000

Bathrooms	0.00
Acres	0.00
Year Built	2011
Type	Business
Status	Active

Community Information

Address	Road
Area	Edmonton
Subdivision	Ellerslie Industrial
City	Edmonton
County	ALBERTA
Province	AB
Postal Code	T6X 0W6

Additional Information

Date Listed	February 5th, 2025
Days on Market	57
Zoning	Zone 54

DATA IS DEEMED RELIABLE BUT IS NOT GUARANTEED ACCURATE BY THE REALTORS® ASSOCIATION OF EDMONTON. COPYRIGHT 2025 BY THE REALTORS® ASSOCIATION OF EDMONTON. ALL RIGHTS RESERVED. Trademarks are owned or controlled by the Canadian Real Estate Association (CREA) and identify real estate professionals who are members of CREA (REALTOR®, REALTORS®) and/or the quality of services they provide (MLS®, Multiple Listing Service®)

Listing information last updated on April 3rd, 2025 at 7:47pm MDT