

\$127,500 - 210 13910 Stony Plain Road, Edmonton

MLS® #E4420087

\$127,500

2 Bedroom, 1.00 Bathroom, 1,059 sqft
Condo / Townhouse on 0.00 Acres

Glenora, Edmonton, AB

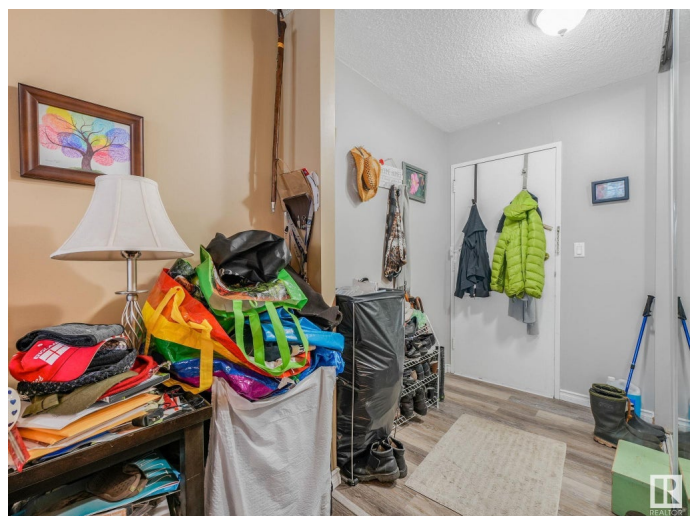
Exceptional value minutes from downtown! This large 2 bedroom unit in Crescent Place Glenora features a large living room, galley kitchen, dining room, massive primary bedroom with twin closets, four piece bathroom, a large second bedroom, as well as an in suite storage room. Additional features include a south facing balcony, same floor laundry, and underground parking. Condo fees include all utilities and also feature an indoor saltwater pool, on-site management, sauna, gym, and party room.

Built in 1969

Essential Information

MLS® #	E4420087
Price	\$127,500
Bedrooms	2
Bathrooms	1.00
Full Baths	1
Square Footage	1,059
Acres	0.00
Year Built	1969
Type	Condo / Townhouse
Sub-Type	Apartment High Rise
Style	Single Level Apartment
Status	Active

Community Information



Address	210 13910 Stony Plain Road
Area	Edmonton
Subdivision	Glenora
City	Edmonton
County	ALBERTA
Province	AB
Postal Code	T5N 3R2

Amenities

Amenities	Intercom, Parking-Visitor, Pool-Indoor, Security Door, Social Rooms, Storage-In-Suite
Parking	Heated, Underground
Has Pool	Yes

Interior

Appliances	None
Heating	Hot Water, Natural Gas
# of Stories	18
Stories	1
Has Basement	Yes
Basement	None, No Basement

Exterior

Exterior	Concrete, Brick
Exterior Features	Public Transportation, Schools, Shopping Nearby, See Remarks
Roof	Tar & Gravel
Construction	Concrete, Brick
Foundation	Concrete Perimeter

Additional Information

Date Listed	January 31st, 2025
Days on Market	71
Zoning	Zone 11
Condo Fee	\$977

DATA IS DEEMED RELIABLE BUT IS NOT GUARANTEED ACCURATE BY THE REALTORS® ASSOCIATION OF EDMONTON. COPYRIGHT 2025 BY THE REALTORS® ASSOCIATION OF EDMONTON. ALL RIGHTS RESERVED. Trademarks are owned or controlled by the Canadian Real Estate Association (CREA) and identify real estate professionals who are members of CREA (REALTOR®, REALTORS®) and/or the quality of services they provide (MLS®, Multiple Listing Service®)

Listing information last updated on April 12th, 2025 at 4:32am MDT