

\$549,900 - 7852 Jasper Avenue, Edmonton

MLS® #E4417329

\$549,900

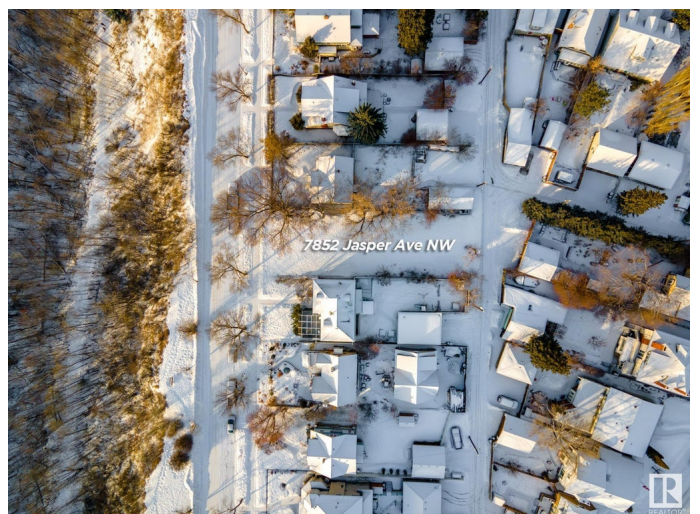
0 Bedroom, 0.00 Bathroom,
Single Family on 0.00 Acres

Cromdale, Edmonton, AB

****PLATINUM PROPERTY!**** Discover an unparalleled opportunity to build your dream home in the heart of Edmonton's historic Viewpoint neighborhood. This generous 50' x 150' lot offers breathtaking views of the city skyline and the iconic river valley. Imagine waking up to Edmonton's natural beauty, with easy access to the extensive network of walking and biking trails, including the serene Kinnaird Park. Positioned for convenience, this location lets you walk or bike to downtown hotspots like the ICE District, vibrant farmers' markets, cultural gems like the museum, and so much more. With its unbeatable combination of stunning vistas and urban accessibility, this property is perfect for those relocating to build a one of a kind home and seeking a blend of natural beauty and city living.

Essential Information

MLS® #	E4417329
Price	\$549,900
Bathrooms	0.00
Acres	0.00
Type	Single Family
Sub-Type	Vacant Lot/Land
Status	Active



Community Information

Address 7852 Jasper Avenue
Area Edmonton
Subdivision Cromdale
City Edmonton
County ALBERTA
Province AB
Postal Code T5H 3R9

Exterior

Exterior Features Back Lane, Flat Site, River Valley View, River View, View Downtown,
See Remarks

School Information

Elementary NORWOOD SCHOOL
Middle HIGHLANDS SCHOOL
High EASTGLEN SCHOOL

Additional Information

Date Listed January 7th, 2025
Days on Market 88
Zoning Zone 09

DATA IS DEEMED RELIABLE BUT IS NOT GUARANTEED ACCURATE BY THE REALTORS® ASSOCIATION OF EDMONTON. COPYRIGHT 2025 BY THE REALTORS® ASSOCIATION OF EDMONTON. ALL RIGHTS RESERVED. Trademarks are owned or controlled by the Canadian Real Estate Association (CREA) and identify real estate professionals who are members of CREA (REALTOR®, REALTORS®) and/or the quality of services they provide (MLS®, Multiple Listing Service®)

Listing information last updated on April 4th, 2025 at 11:02pm MDT