

\$855,000 - 530 280 Portage Close, Sherwood Park

MLS® #E4314383

\$855,000

0 Bedroom, 0.00 Bathroom,
Office on 0.00 Acres

Buckingham Business Park, Sherwood Park,
AB

3,175 sq.ft office/warehouse space. Storage yard space available for lease. Grade level loading door 12'x14'. 2 stage sump. Minimum 20' clear ceiling height, 30' ceiling height at the peak.

Built in 2013

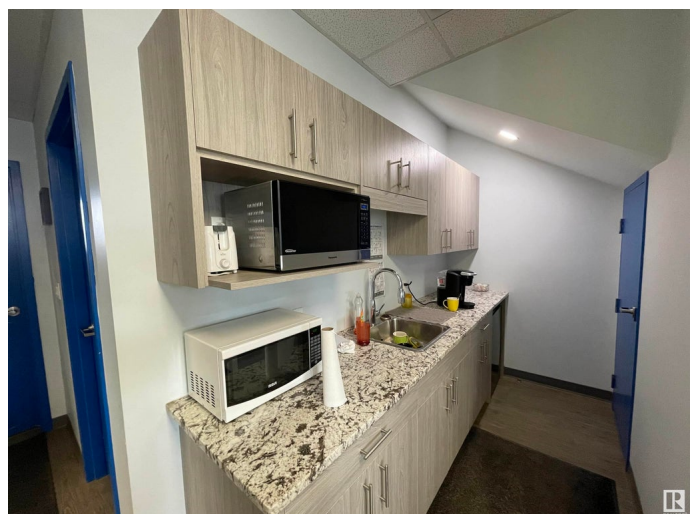
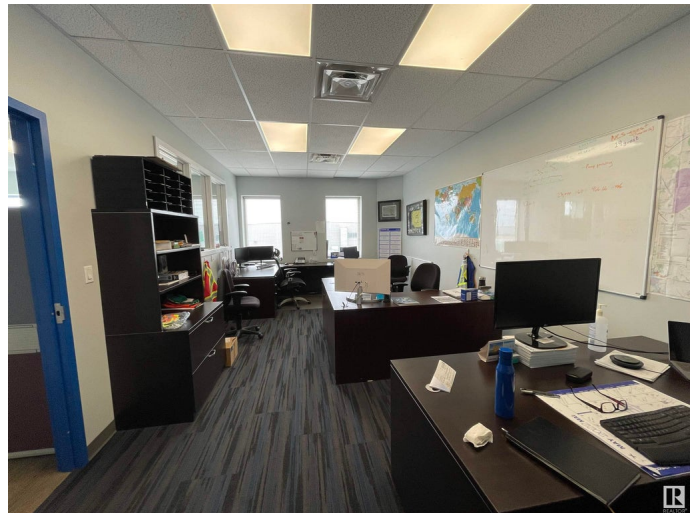
Essential Information

MLS® #	E4314383
Price	\$855,000
Bathrooms	0.00
Acres	0.00
Year Built	2013
Type	Office
Status	Active

Community Information

Address	530 280 Portage Close
Area	Sherwood Park
Subdivision	Buckingham Business Park
City	Sherwood Park
County	ALBERTA
Province	AB
Postal Code	T8H 2R6

Exterior



Exterior	Steel Frame
Construction	Steel Frame

Additional Information

Date Listed	September 21st, 2022
Days on Market	926
Zoning	Zone 25

DATA IS DEEMED RELIABLE BUT IS NOT GUARANTEED ACCURATE BY THE REALTORS® ASSOCIATION OF EDMONTON. COPYRIGHT 2025 BY THE REALTORS® ASSOCIATION OF EDMONTON. ALL RIGHTS RESERVED. Trademarks are owned or controlled by the Canadian Real Estate Association (CREA) and identify real estate professionals who are members of CREA (REALTOR®, REALTORS®) and/or the quality of services they provide (MLS®, Multiple Listing Service®)

Listing information last updated on April 4th, 2025 at 10:03am MDT